



MAGNUM PRESS

PO Box 317 - 725 E. Main St. - Adamsville, TN 38310 - www.magnumpress.com - 731-632-1285



Standard Equipment:

- Allen Bradley MicroLogix PLC with Panel View HMI based controls
- NFPA79 & UL508A Compliant Electrical Controls
- 2-Hand No-Tie-Down Start
- CAT 4 Safety Start Relay
- Adjustable Tonnage
- Adjustable Stroke
- Pressure and Distance Reversal Mode
- Manual Setup Mode
- Energy Saver Shut Down
- Top Stop Over-Run
- True 2 Speed Ram
- Electro-Hydraulic Decompression
- Self-Contained Removable Hydraulic Power Unit
- Visual Level/Temp Gauge
- Removable Bolster
- Lockable Disconnect
- NEMA enclosures
- TEFC EISA Compliant Electric Motor
- Magnetic Starter/ Electronic Overload
- Single Point Power Connection

Magnum Press has a long list of options that you can select from to customize your press the way you need it.

MCF Series Floor Model 4-35 Ton Gap Frame Press

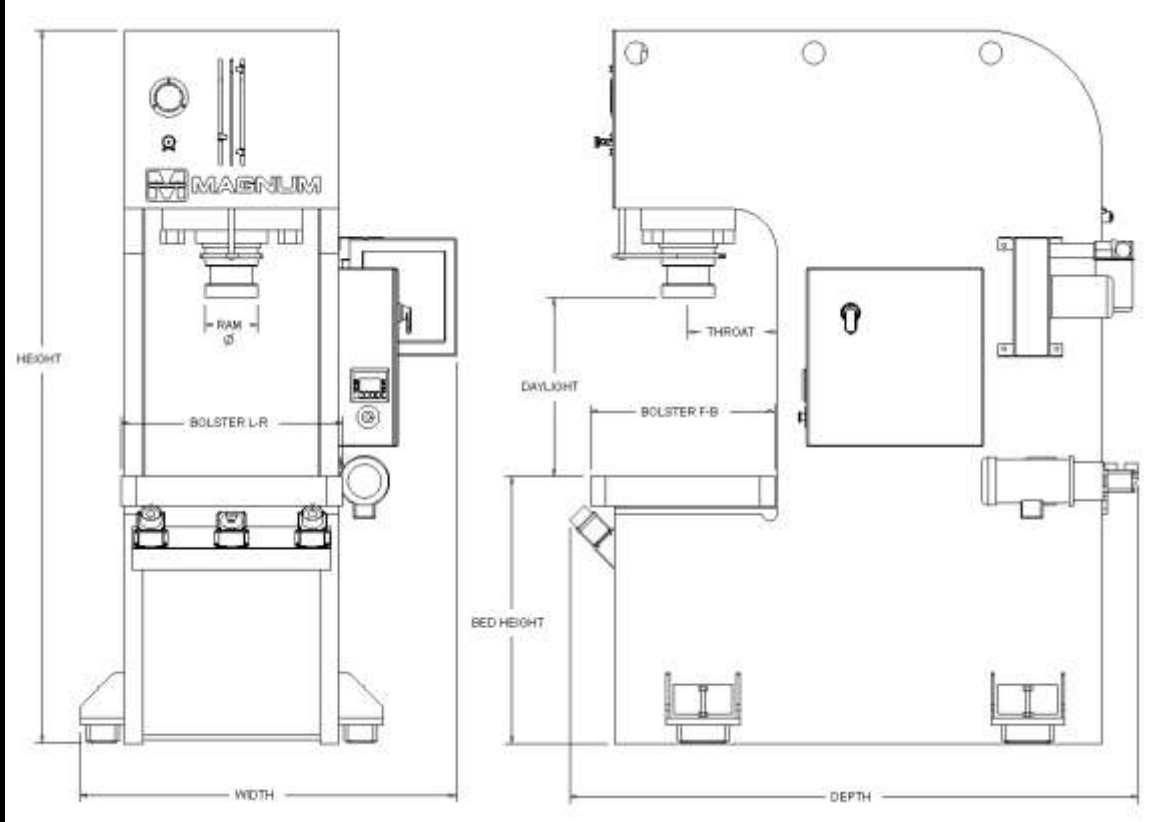
Floor Model Gap Frame Hydraulic Press

Often referred to as a "C" frame hydraulic press, Magnum floor model presses are available in standard model configurations from 4 to 250 tons. Our 4-35 floor model presses feature the same speed and performance rates as our 4-35 ton bench models but they require no separate stand. The floor models also have larger bed areas than the equivalent tonnage bench model hydraulic presses. The MCF Series is a classic HEAVY DUTY C-Frame design hydraulic press with Unguided RAM and Anti-Rotation. NFPA SAFE (Self Aligning Flange End) standard RAM ends are used for connection to your tooling with our Quick Change Die Coupler or our Split Ring Die Coupler. These self contained gap frame hydraulic presses can be easily customized for your application and they are suitable for a wide variety of operations including staking, forming, riveting, blanking, punching, coining and assembly. Our HEAVY DUTY frame designs resist deflection and maintain better parallelism than most other 'C Frame' hydraulic press designs and they undergo rigorous analysis through Finite Element Analysis design testing. Standard features include completely removable power units, fast & reliable hydraulic systems and standardized parts for ease of maintenance. If you need guiding for your tooling, take a look at our M2PF and M4PF Post Guided Platen models or our heavy duty MGF GIB guided models.



MAGNUM PRESS

PO Box 317 - 725 E. Main St. - Adamsville, TN 38310 - www.magnumpress.com - 731-632-1285



MODEL	MCF-	4A	4B	6A	6B	10A	10B	15A	15B	25A	25B	35A	35B
Rated Tonnage	<i>(Adjustable)</i>	3.9	3.9	6.1	6.1	10.4	10.4	15.7	15.7	24.5	24.5	35.3	35.3
STANDARD Inches Per Minute (IPM)	RAPID	420	635	390	1300	400	1200	305	1030	265	820	275	790
	WORK	200	300	190	190	150	150	120	120	130	130	125	125
	RETURN	380	570	375	1250	240	750	200	660	255	790	225	630
CPM (1")	.13"	90	110	90	90	78	78	68	68	70	70	70	70
CPM (4")	WORK	40	52	37	80	31	67	25	61	27	61	26	56
Stroke <i>(in. adjustable)</i>		8	8	8	8	10	10	10	10	12	12	12	12
Daylight <i>(in)</i>		16	16	16	16	20	20	20	20	24	24	24	24
Shut Height <i>(in)</i>		8	8	8	8	10	10	10	10	12	12	12	12
Throat <i>(in)</i>		8	8	8	8	10	10	10	10	12	12	12	12
Bolster L-R <i>(in)</i>		14	14	14	14	16	16	18	18	20	20	22	22
Bolster F-B <i>(in)</i>		12	12	13	13	16	16	16	16	19	19	20	20
Width <i>(in)</i>		30	30	31	31	31	31	32	32	35	35	37	37
Depth <i>(in)</i>		42	42	42	42	48	48	56	56	64	64	65	65
Height <i>(in)</i>		70	70	71	71	78	78	79	79	89	89	92	92
Approx Weight <i>(lbs)</i>		1193	1223	1447	1520	2138	2214	3098	3209	4789	4395	5302	5532
Bed Height <i>(in)</i>		36	36	36	36	36	36	36	36	36	36	36	36

Specifications subject to change without notice.