



MAGNUM PRESS

PO Box 317 - 725 E. Main St., Adamsville, TN 38310 - www.magnumpress.com - 731-632-1285



Standard Equipment:

- Allen Bradley MicroLogix PLC with Panel View HMI based controls
- NFPA79 & UL508A Compliant Electrical Controls
- 2-Hand No-Tie-Down Start
- CAT 4 Safety Start Relay
- Adjustable Tonnage
- Adjustable Stroke
- Pressure and Distance Reversal Mode
- Manual Setup Mode
- Energy Saver Shut Down
- Top Stop Over-Run
- True 2 Speed Ram
- Electro-Hydraulic Decompression
- Self-Contained Removable Hydraulic Power Unit
- Visual Level/Temp Gauge
- Lockable Disconnect
- NEMA enclosures
- TEFC EISA Compliant Electric Motor
- Magnetic Starter/ Electronic Overload
- Single Point Power Connection

Magnum Press has a long list of options that you can select from to customize your press the way you need it.

M2PS Series 4-35 Ton

2-Post Column Press with Precision Guided Slide Platen

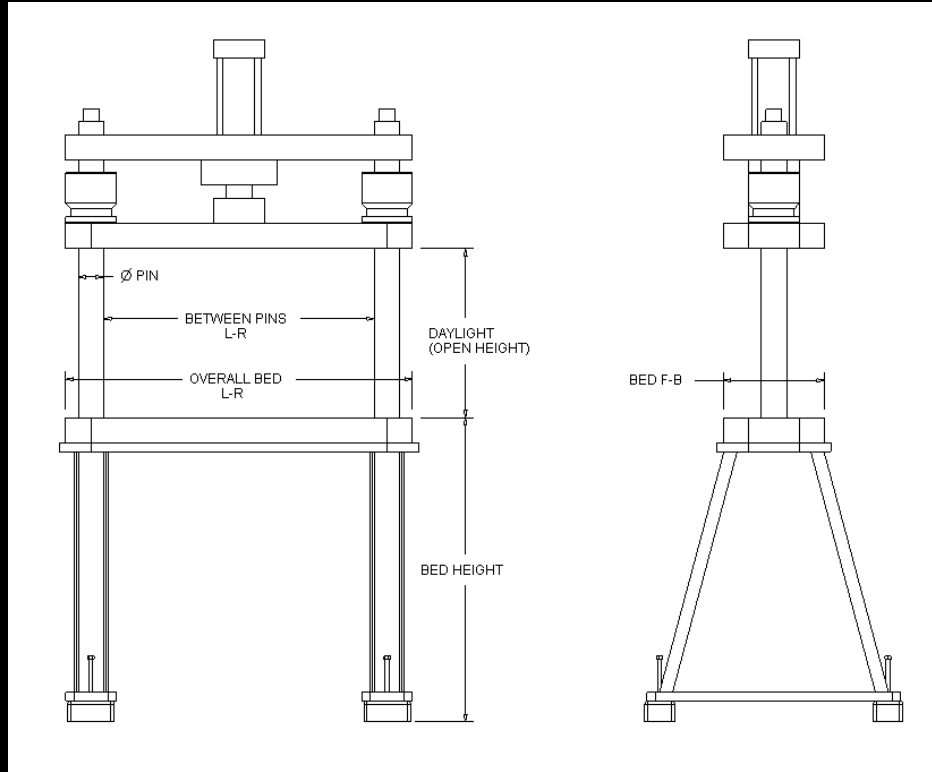
Two Post Column Style Post Press

Magnum hydraulic column presses feature rugged frame construction that is custom built to customers' exact requirement and they are designed to meet demanding production schedules with years of trouble free operation. Structural designs undergo rigorous analysis through Finite Element Analysis (FEA) design testing. Post presses can accommodate small to very large die space with frame designs and speeds to match the application. As frames are loaded they maintain superior bed to ram parallelism over gap frame presses. Post presses may be also be more cost efficient than traditional gap frame presses. M2PS presses feature precision ground shafting and slide platens with oversized honed bushings for tight clearance tolerances. 'Superbolt' multi-jack column tensioners are used in this rugged frame design. A wide range of hydraulic systems are used to meet specific performance. Industry standard components are used in hydraulic and electrical systems to insure a reliable system with readily available components when you need them.



MAGNUM PRESS

PO Box 317 - 725 E. Main St., Adamsville, TN 38310 - www.magnumpress.com - 731-632-1285



MODEL	M2PS-	4A	4B	6A	6B	10A	10B	15A	15B	25A	25B	35A	35B
Rated Tonnage (Adjustable)		3.9	3.9	6.1	6.1	10.4	10.4	15.7	15.7	24.5	24.5	35.3	35.3
IPM Ram Speeds	Rapid	420	635	390	1300	400	1200	305	1030	265	820	275	790
	Press	200	300	190	190	150	150	120	120	130	130	125	120
	Retract	380	570	375	1250	240	750	200	660	255	790	225	630
CPM (1")	0.13" WORK	90	110	90	90	78	78	68	68	70	70	70	70
CPM (2")		65	84	63	115	51	93	44	87	46	85	43	77
CPM (3")		49	66	48	96	38	78	32	71	34	70	32	63
CPM (4")		40	52	37	80	31	67	25	61	27	61	26	56
Stroke (in. adjustable)		-	-	-	-	-	-	-	-	-	-	-	-
Daylight (in)		-	-	-	-	-	-	-	-	-	-	-	-
Shut Height (in)		-	-	-	-	-	-	-	-	-	-	-	-
Between Pins L-R		-	-	-	-	-	-	-	-	-	-	-	-
Overall Bed F-B		-	-	-	-	-	-	-	-	-	-	-	-
Width (in)		-	-	-	-	-	-	-	-	-	-	-	-
Depth (in)		-	-	-	-	-	-	-	-	-	-	-	-
Height (in)		-	-	-	-	-	-	-	-	-	-	-	-
Bolster Height (in)		-	-	-	-	-	-	-	-	-	-	-	-

Magnum column presses are built to customer specifications. Hydraulic systems can be matched to customer CPM and IPM specs other than chart performances. Daylight, stroke, bed height and between pin dimensions are customer specified.